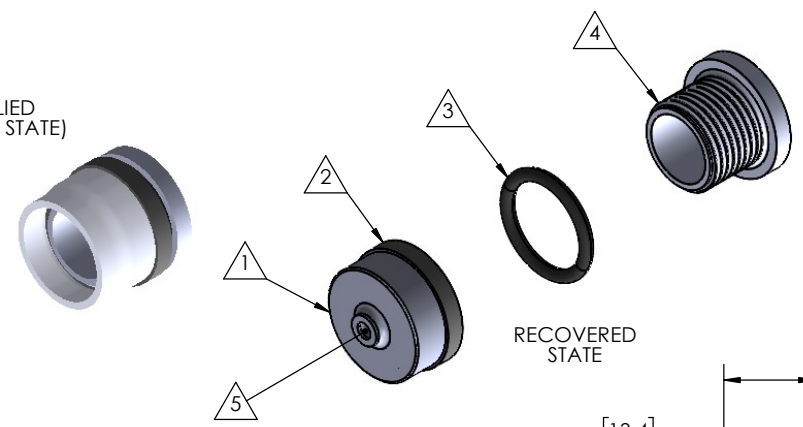


8 7 6 5 4 3 2 1

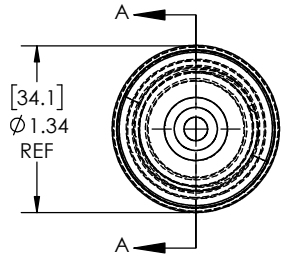
REVISIONS		
REV.	DESCRIPTION	DATE
A	INITIAL DRAWING RELEASE	10/24/2025
B	REFINE DIMENSIONS AND DECIMAL PRECISION	12/16/2025
C	UPDATE TOLERANCE TABLE	12/29/2025

AS SUPPLIED  
(EXPANDED STATE)

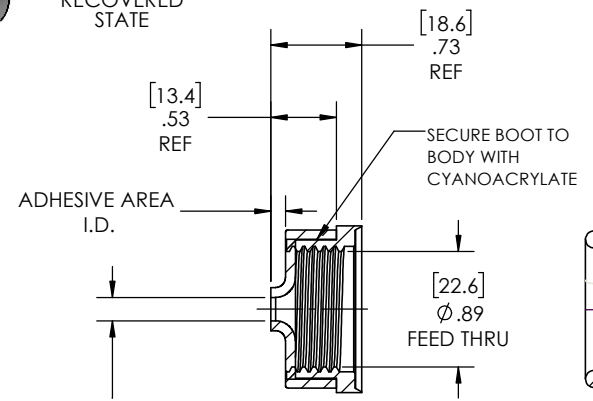


RECOVERED STATE

NOTE: REFERENCE FOR SEAL ASSEMBLY INSTALLATION:  
ASSEMBLY MAY BE INSTALLED IN PANELS FROM  
0.08"(2.0mm) - 0.35"(8.9mm).  
RECOMMENDED DRILL HOLE DIAMETER  
OF 1.00" (25.4mm)



[34.1]  
Ø 1.34  
REF

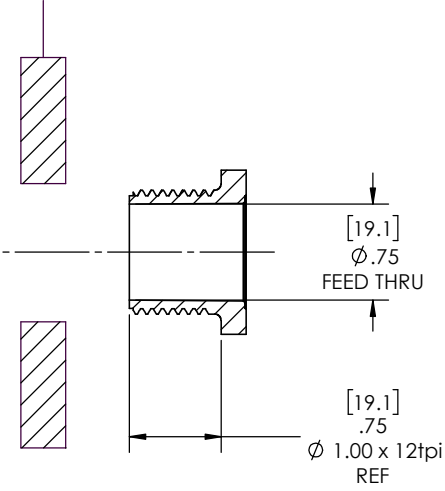


ADHESIVE AREA  
I.D.

SECURE BOOT TO  
BODY WITH  
CYANOACRYLATE

[22.6]  
Ø .89  
FEED THRU

Expanded Min ID=0.98(24.8) REF  
[Recovered Max ID=0.25(6.4)] REF



[19.1]  
Ø .75  
FEED THRU

[19.1]  
Ø 1.00 x 12tpi  
REF

SECTION A-A  
RECOVERED  
SCALE 1 : 1

NOTES:

- ITEM# 1 HEAT SHRINKABLE BOOT MATERIAL IS IN ACCORDANCE WITH POLYOLEFIN STANDARDS DEFINED IN SAE AS81765/1 REFERENCE DIMENSIONS MAY DEVIATE AS MUCH AS +OR- 1/4"
- FACTORY APPLIED HOT MELT ADHESIVE IS STANDARD

ITEM	PART DESCRIPTION	PART NO.	MATERIAL
1	Heat-shrinkable boot	S-2X-0.75 BOOT	Flame Retardant Polyolefin
2	Body	S-2XB	Glass Fiber Reinforced, PBT
3	O-ring	AS-214	Buna
4	Nut	S-2XN	Glass Fiber Reinforced, PBT
5	Adhesive		Hotmelt Polyamide

**NU-TECH**

UNLESS OTHERWISE SPECIFIED:  
DIMENSIONS ARE IN INCHES  
TOLERANCES:  
FRACTIONAL: 1/32  
ONE DECIMAL PLACE ± 0.060  
TWO DECIMAL PLACE ± 0.025  
THREE DECIMAL PLACE ± 0.010  
DO NOT SCALE DRAWING

PART NO.  
**NUS-2X-0.75**

DWG. NO. NUS-2X-0.75-ASSY

WEIGHT: 0.011 REV C

DRAWN: MLJ DATE: 2/3/2026

SCALE: 1:1 SHEET 1 OF 1

8 7 6 5 4 3 2 1

8 7 6 5 4 3 2 1