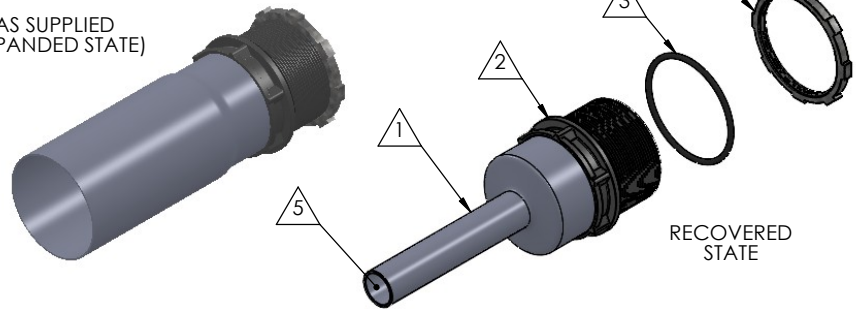


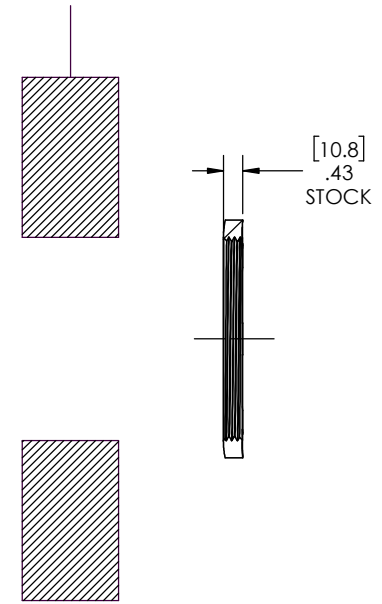
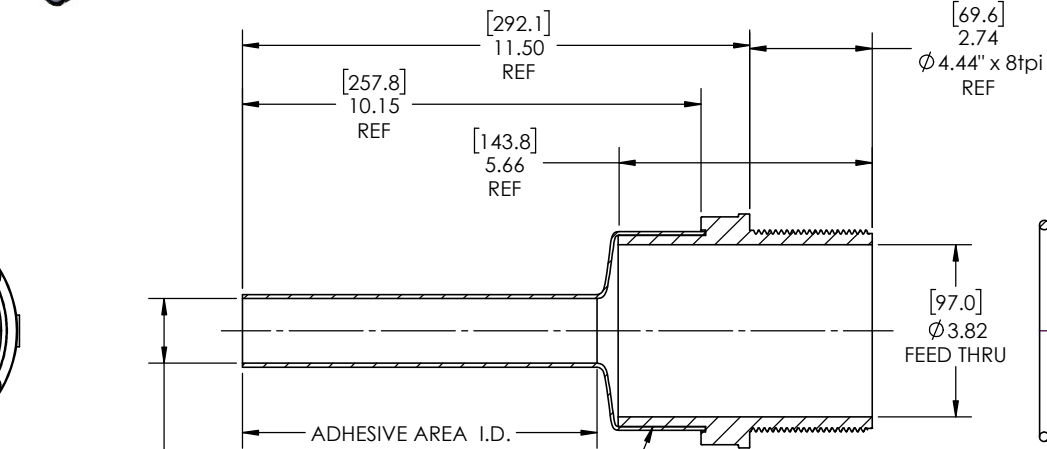
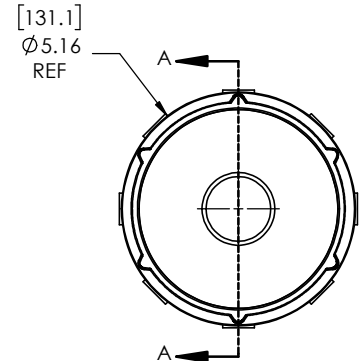
8 7 6 5 4 3 2 1

REVISIONS		
REV.	DESCRIPTION	DATE
A	UPDATE DRAWING TO 2025 STANDARDS	11/3/2025
B	REFINE DIMENSIONS AND DECIMAL PRECISION	12/16/2025
C	UPDATE TOLERANCE TABLE	12/29/2025

AS SUPPLIED
(EXPANDED STATE)



NOTE: REFERENCE FOR SEAL ASSEMBLY INSTALLATION:
ASSEMBLY MAY BE INSTALLED IN PANELS FROM
0.13"(3.2mm) - 2.13"(54.1mm).
RECOMMENDED DRILL HOLE DIAMETER
OF 4.50" (114.3mm)



Expanded Min ID= 4.54(115.3) REF
[Recovered Max ID=1.43(36.3)] REF

SECTION A-A
RECOVERED
SCALE 1 : 2.75

- NOTES:
- ITEM#1 HEAT SHRINKABLE BOOT MATERIAL IS IN ACCORDANCE WITH POLYOLEFIN STANDARDS DEFINED IN SAE AS81765/1 REFERENCE DIMENSIONS MAY DEVIATE AS MUCH AS +OR- 1/2"
 - FACTORY APPLIED HOT MELT ADHESIVE IS STANDARD

ITEM	PART DESCRIPTION	PART NO.	MATERIAL
1	Heat-shrinkable boot	S-6X BOOT	Flame Retardant Polyolefin
2	Body	S-6XB	Glass Fiber Reinforced, PBT
3	O-ring	AS-349	Buna
4	4" NPSM Conduit Nut	LN110	Zinc Plated Steel
5	Adhesive		Hotmelt Polyamide

NU-TECH

UNLESS OTHERWISE SPECIFIED: DIMENSIONS ARE IN INCHES TOLERANCES: FRACTIONAL ±1/32 ONE DECIMAL PLACE ± 0.060 TWO DECIMAL PLACE ± 0.025 THREE DECIMAL PLACE ± 0.010 DO NOT SCALE DRAWING	PART NO. NUS-6X	
	DWG. NO. NUS-6X-ASSY	
	WEIGHT: 2.011	REV C
DRAWN: MLJ	DATE: 2/3/2026	SCALE: 1:2.75
		SHEET 1 OF 1

8 7 6 5 4 3 2 1

8 7 6 5 4 3 2 1