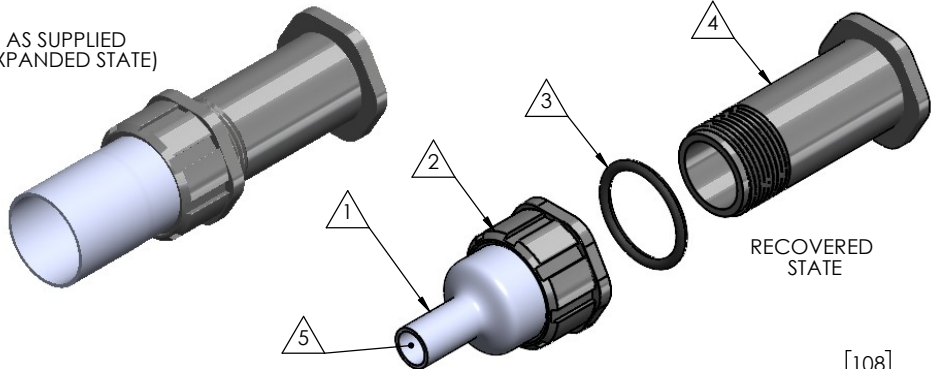


8 7 6 5 4 3 2 1

AS SUPPLIED  
(EXPANDED STATE)

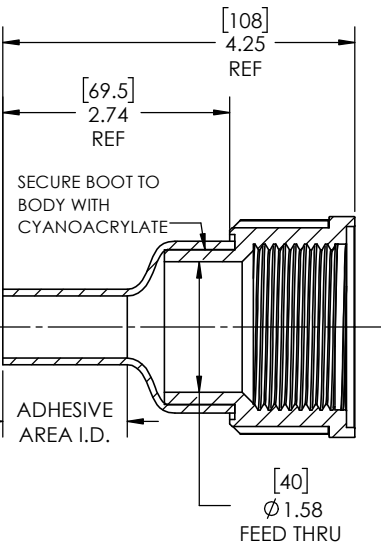
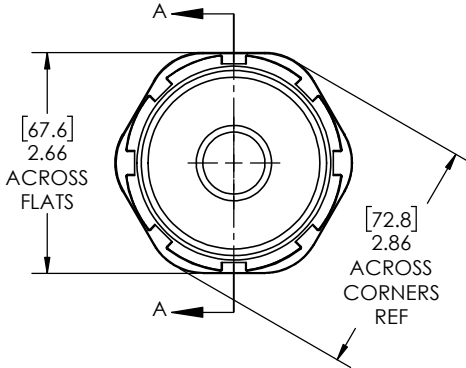


RECOVERED  
STATE

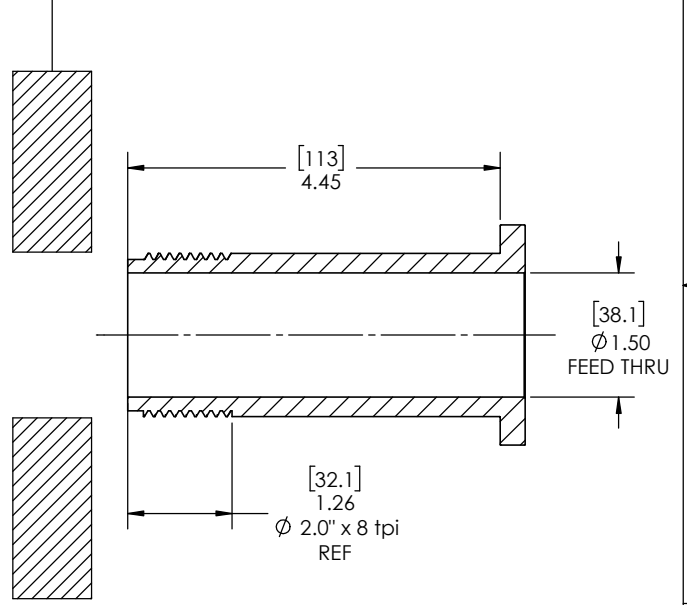
NOTE: REFERENCE FOR SEAL ASSEMBLY INSTALLATION:  
ASSEMBLY MAY BE INSTALLED IN PANELS FROM  
3.27"(83.1mm) - 3.77"(95.8mm).  
RECCOMENDED DRILL HOLE DIAMETER  
OF 2.00" (50.8mm)

REVISIONS		
REV.	DESCRIPTION	DATE
A	UPDATE DRAWING TO 2025 STANDARDS	9/23/2025
B	REFINE DIMENSIONS AND DECIMAL PRECISION	12/16/2025
C	UPDATE TOLERANCE TABLE	12/29/2025

Expanded Min ID=1.93(49.0) REF  
[Recovered Max ID= 0.75(19.1)] REF



SECTION A-A  
RECOVERED  
SCALE 1 : 1.5



- NOTES:
- ITEM#1 HEAT SHRINKABLE BOOT MATERIAL IS IN ACCORDANCE WITH POLYOLEFIN STANDARDS DEFINED IN SAE AS81765/1 REFERENCE DIMENSIONS MAY DEVIATE AS MUCH AS +OR- 1/4"
  - FACTORY APPLIED HOT MELT ADHESIVE IS STANDARD

ITEM	PART DESCRIPTION	PART NO.	MATERIAL
1	Heat-shrinkable boot	S-4 BOOT	Flame Retardant Polyolefin
2	Body	S-4B	Glass Fiber Reinforced, PBT
3	O-ring	AS-329	Buna
4	Nut	S-4x4.5LGN	Glass Fiber Reinforced, PBT
5	Adhesive		Hotmelt Polyamide

**NU-TECH**

UNLESS OTHERWISE SPECIFIED: DIMENSIONS ARE IN INCHES TOLERANCES: FRACTIONAL ±1/32 ONE DECIMAL PLACE ± 0.060 TWO DECIMAL PLACE ± 0.025 THREE DECIMAL PLACE ± 0.010 DO NOT SCALE DRAWING	PART NO. <b>NUS-4x4.5LG</b>	
	DWG. NO. NUS-4x4.5LG-ASSY	
	WEIGHT: 0.624	REV C

**PROPRIETARY AND CONFIDENTIAL**  
THE INFORMATION CONTAINED IN THIS DRAWING IS THE SOLE PROPERTY OF Cross Technology INC. ANY REPRODUCTION IN PART OR AS A WHOLE WITHOUT THE WRITTEN PERMISSION OF Cross Technology INC. IS PROHIBITED.

8 7 6 5 4 3 2 1