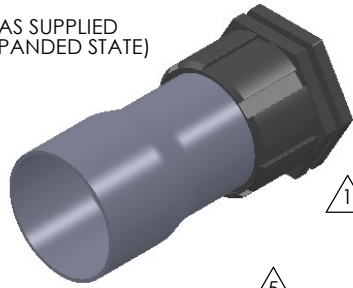
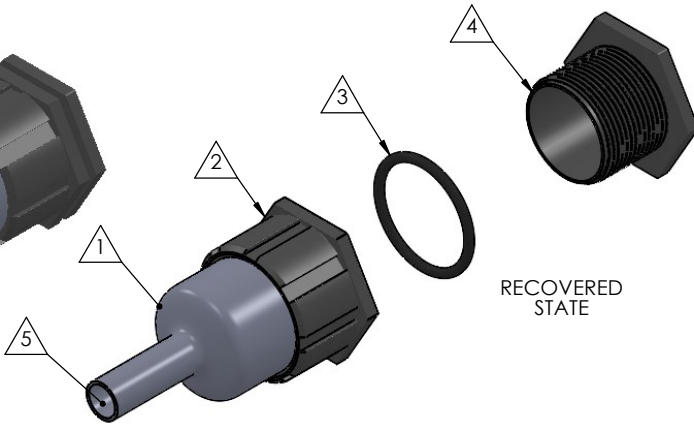


8 7 6 5 4 3 2 1

AS SUPPLIED  
(EXPANDED STATE)

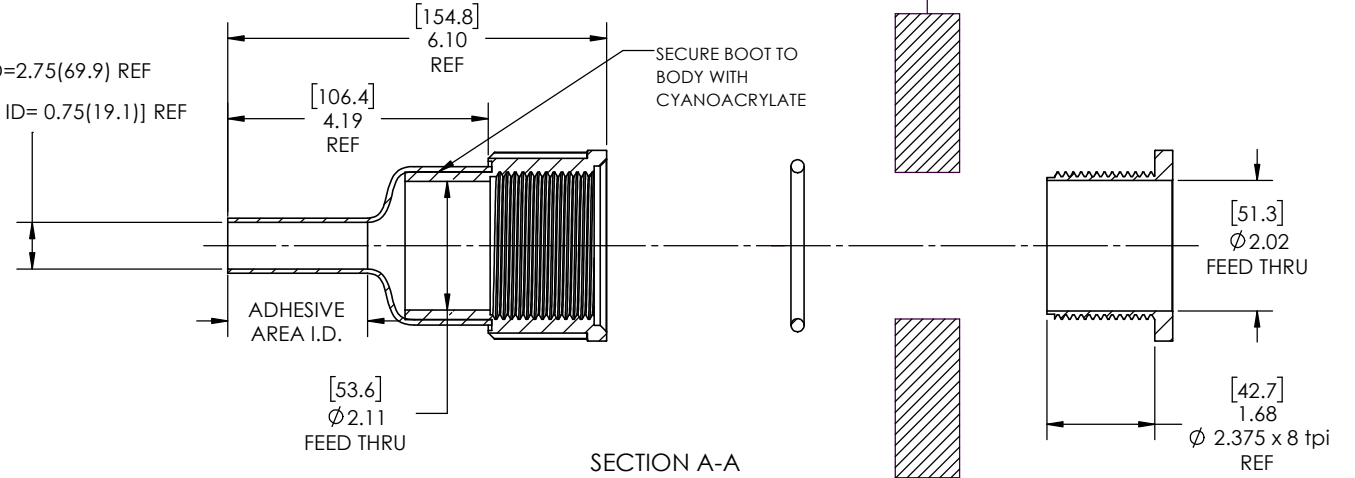
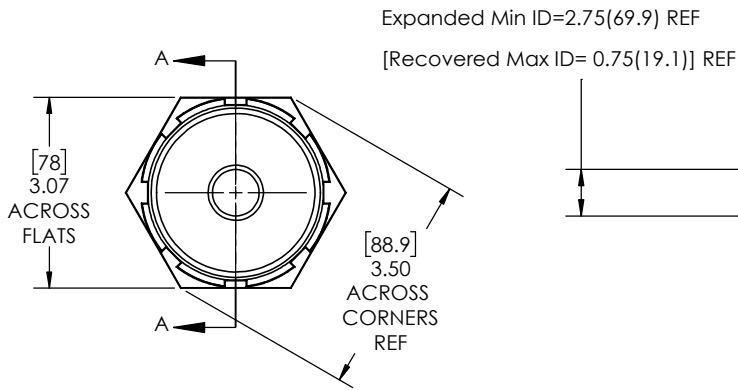


RECOVERED  
STATE



REVISIONS		
REV.	DESCRIPTION	DATE
A	UPDATE DRAWING TO 2025 STANDARDS	10/27/2025
B	UPDATE DIMENSIONS TO APPROPRIATE TOLERANCE FOR MANUFACTURING PURPOSES	12/16/2025
C	UPDATE TOLERANCE TABLE	12/29/2025

NOTE: REFERENCE FOR SEAL ASSEMBLY INSTALLATION:  
ASSEMBLY MAY BE INSTALLED IN PANELS FROM  
0.18"(4.4mm) - 0.95"(24.1mm).  
RECCOMENDED DRILL HOLE DIAMETER OF 2.36"



NOTES:

- ITEM #1 HEAT SHRINKABLE BOOT MATERIAL IS IN ACCORDANCE WITH POLYOLEFIN STANDARDS DEFINED IN SAE AS81765/1 REFERENCE DIMENSIONS MAY DEVIATE AS MUCH AS +OR- 1/4"
- FACTORY APPLIED HOT MELT ADHESIVE IS STANDARD

ITEM	PART DESCRIPTION	PART NO.	MATERIAL
1	Heat-shrinkable boot	S-4X BOOT	Flame Retardant Polyolefin
2	Body	S-4XB	Glass Fiber Reinforced, PBT
3	O-ring	AS-332	Buna
4	Nut	S-4XN	Glass Fiber Reinforced, PBT
5	Adhesive		Hotmelt Polyamide

**NU-TECH**

UNLESS OTHERWISE SPECIFIED:  
DIMENSIONS ARE IN INCHES  
TOLERANCES:  
FRACTIONAL: ±1/32  
ONE DECIMAL PLACE ± 0.060  
TWO DECIMAL PLACE ± 0.025  
THREE DECIMAL PLACE ± 0.010

PART NO.  
**NUS-4X**

DWG. NO. **NUS-4X-ASSY**

WEIGHT: **0.54** REV **C**

DO NOT SCALE DRAWING

DRAWN: MLJ DATE: 2/3/2026

SCALE: 1:2 SHEET 1 OF 1

8 7 6 5 4 3 2 1