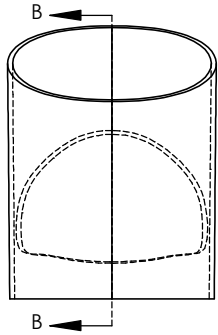
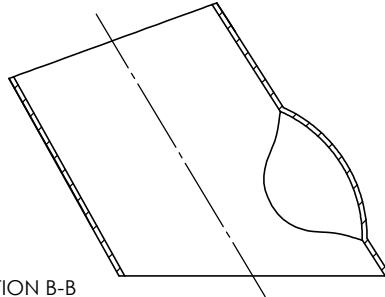


8 7 6 5 4 3 2 1

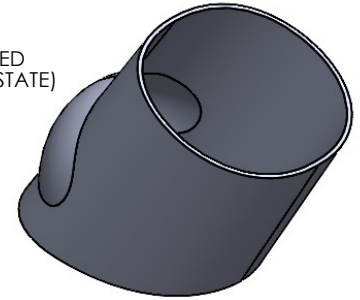
REVISIONS		
REV.	DESCRIPTION	DATE
A	UPDATE DRAWING TO 2025 STANDARDS	3/4/2026



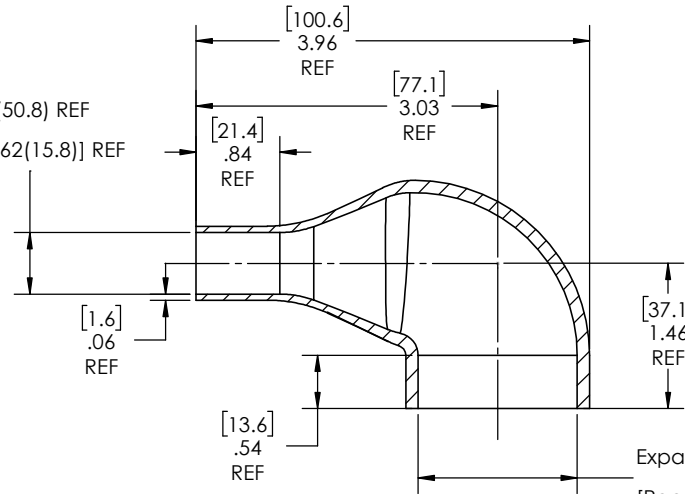
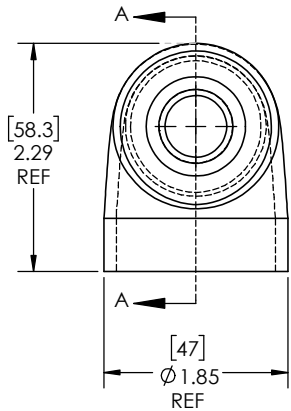
SECTION B-B  
EXPANDED  
SCALE 1 : 1.25



AS SUPPLIED  
(EXPANDED STATE)

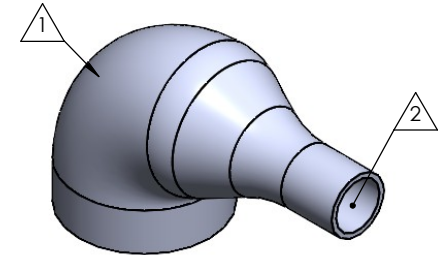


Expanded Min ID= 2.00(50.8) REF  
[Recovered Max ID = 0.62(15.8)] REF



SECTION A-A  
RECOVERED  
SCALE 1 : 1.25

Expanded Min ID=2.00(50.8) REF  
[Recovered Max ID = 1.60(40.6)] REF



RECOVERED  
STATE

NOTES:

- ITEM#1 - HEAT SHRINKABLE BOOT MATERIAL IS IN ACCORDANCE WITH POLYOLEFIN STANDARDS DEFINED IN SAE AS81765/1 REFERENCE DIMENSIONS MAY DEVIATE AS MUCH AS +OR- 1/4"
- ITEM#2 - FACTORY APPLIED HOT MELT ADHESIVE IS STANDARD - INTERIOR SURFACES.
- ITEM #3 - BOOTS INTENDED FOR NU-TECH ASSEMBLIES WILL HAVE HOTMELT APPLIED INSIDE LEGS ONLY AFTER ASSEMBLY HAS BEEN COMPLETED.

ITEM	PART DESCRIPTION	PART NO.	MATERIAL
1	HEAT SHRINKABLE BOOT	M-NU4RL	FLAME RETARDANT POLYOLEFIN
2	ADHESIVE		HOTMELT POLYAMIDE

**PROPRIETARY AND CONFIDENTIAL**

THE INFORMATION CONTAINED IN THIS DRAWING IS THE SOLE PROPERTY OF Cross Technology INC. ANY REPRODUCTION IN PART OR AS A WHOLE WITHOUT THE WRITTEN PERMISSION OF Cross Technology INC. IS PROHIBITED.

**NU-TECH**

UNLESS OTHERWISE SPECIFIED: DIMENSIONS ARE IN INCHES TOLERANCES: FRACTIONAL ±1/16 ONE DECIMAL PLACE ±0.200 TWO DECIMAL PLACE ±0.100 THREE DECIMAL PLACE ±0.050	PART DESC. <b>NU4R</b>
DWG. NO. NU4R	REV A
WEIGHT: 0.0318	SCALE: 1:1.25
DRAWN: MLJ	DATE: 3/26/2026
SHEET 1 OF 1	

8 7 6 5 4 3 2 1