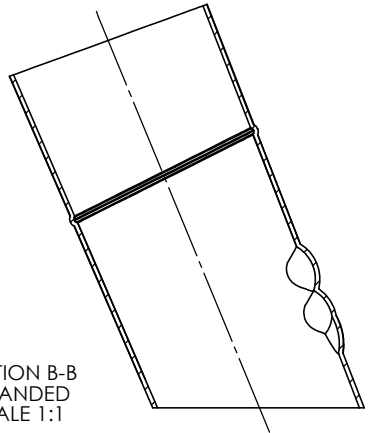
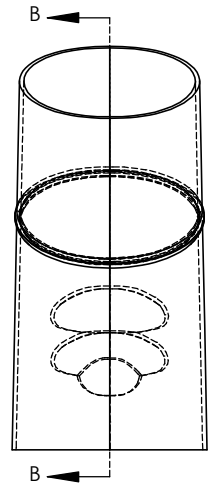
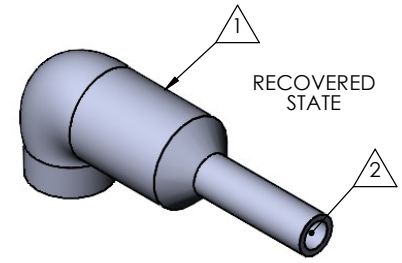
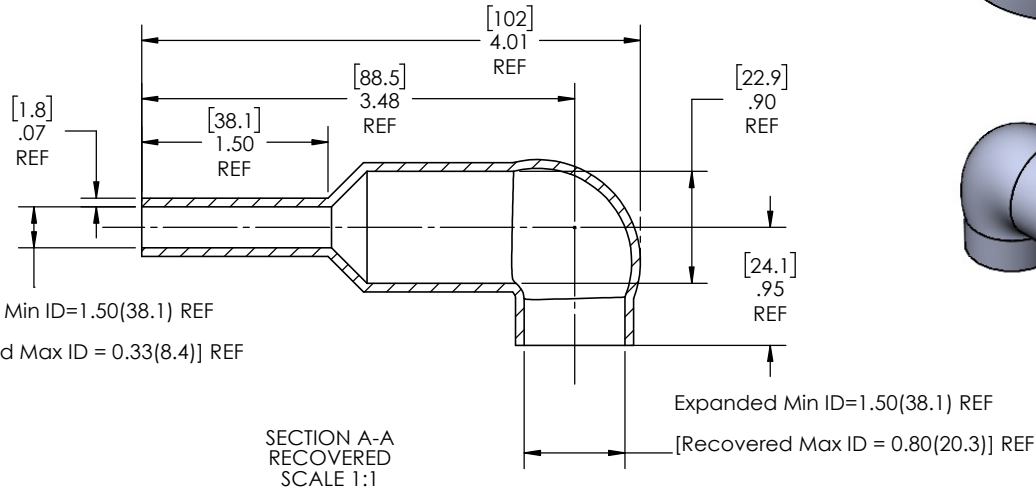
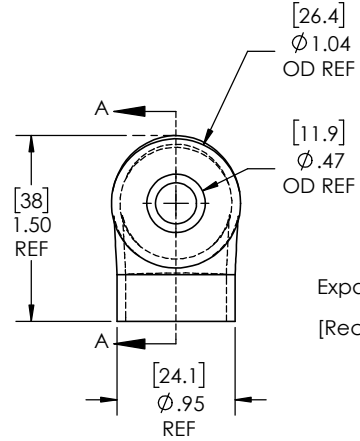
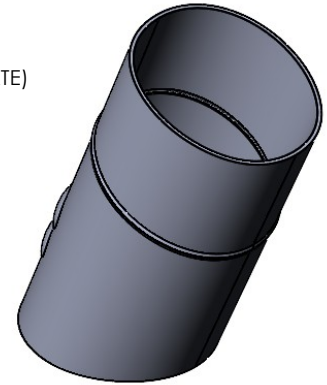


REVISIONS		
REV.	DESCRIPTION	DATE
A	UPDATE DRAWING TO 2025 STANDARDS	3/5/2026



AS SUPPLIED
(EXPANDED STATE)



- NOTES:
- ITEM#1 - HEAT SHRINKABLE BOOT MATERIAL IS IN ACCORDANCE WITH POLYOLEFIN STANDARDS DEFINED IN SAE AS81765/1 REFERENCE DIMENSIONS MAY DEVIATE AS MUCH AS +OR- 1/4"
 - ITEM#2 - FACTORY APPLIED HOT MELT ADHESIVE IS STANDARD - INTERIOR SURFACES.
 - ITEM #3 - BOOTS INTENDED FOR NU-TECH ASSEMBLIES WILL HAVE HOTMELT APPLIED INSIDE LEGS ONLY AFTER ASSEMBLY HAS BEEN COMPLETED.

ITEM	PART DESCRIPTION	PART NO.	MATERIAL
1	HEAT SHRINKABLE BOOT	M-NU2.5RLG	FLAME RETARDANT POLYOLEFIN
2	ADHESIVE		HOTMELT POLYAMIDE

NU-TECH

PROPRIETARY AND CONFIDENTIAL
THE INFORMATION CONTAINED IN THIS DRAWING IS THE SOLE PROPERTY OF Cross Technology INC. ANY REPRODUCTION IN PART OR AS A WHOLE WITHOUT THE WRITTEN PERMISSION OF Cross Technology INC. IS PROHIBITED.

UNLESS OTHERWISE SPECIFIED: DIMENSIONS ARE IN INCHES TOLERANCES: FRACTIONAL ±1/16 ONE DECIMAL PLACE ±0.200 TWO DECIMAL PLACE ±0.100 THREE DECIMAL PLACE ±0.050	PART DESC. NU2.5RLG
DWG. NO. NU2.5RLG	REV A
WEIGHT: 0.02	

Q:\Nu-Tech Engineering\Nu-Tech - Products and Components 2025\Parts and Drawings\Right Angle Boots\Right Angle Boots Without Lip\NU2.5RLG\ NU2.5RLG DO NOT SCALE DRAWING	DRAWN: MLJ	DATE: 3/5/2026	SCALE: 1:1	SHEET 1 OF 1
--	------------	----------------	------------	--------------