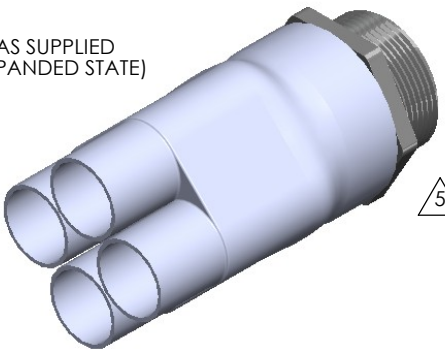


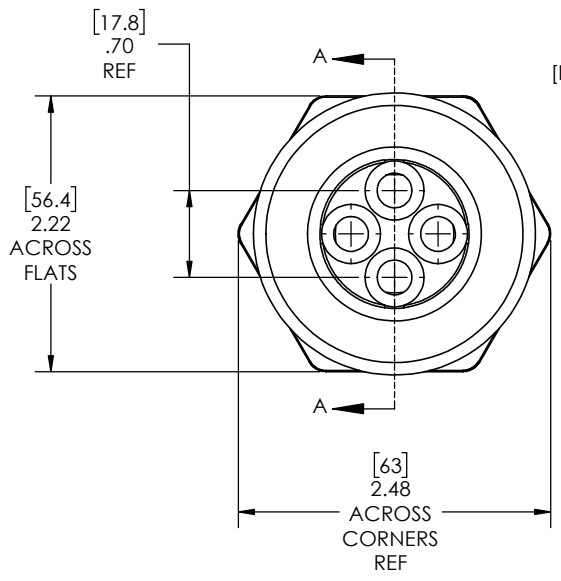
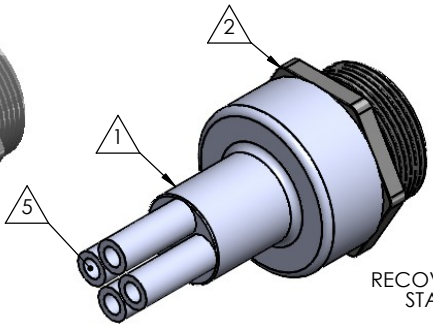
8 7 6 5 4 3 2 1

REVISIONS		
REV.	DESCRIPTION	DATE
A	UPDATE DRAWING TO 2025 STANDARDS	1/22/2026

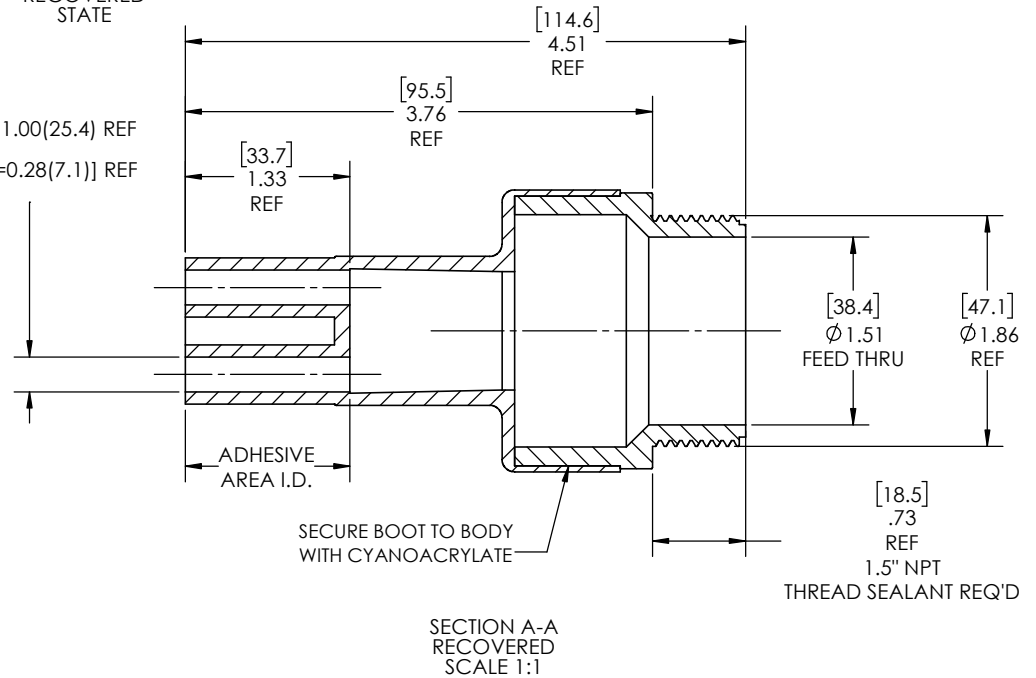
AS SUPPLIED
(EXPANDED STATE)



RECOVERED
STATE



Expanded Min ID=1.00(25.4) REF
[Recovered Max ID=0.28(7.1)] REF



NOTES:

- ITEM#1 HEAT SHRINKABLE BOOT MATERIAL IS IN ACCORDANCE WITH POLYOLEFIN STANDARDS DEFINED IN SAE AS81765/1 REFERENCE DIMENSIONS MAY DEVIATE AS MUCH AS +OR- 1/4"
- FACTORY APPLIED HOT MELT ADHESIVE IS STANDARD

ITEM	PART DESCRIPTION	PART NO.	MATERIAL
1	Heat-shrinkable boot	NUBB4-3	Flame Retardant Polyolefin
2	Body	P-4AB	Glass Fiber Reinforced, PBT
5	Adhesive		Hotmelt Polyamide

NU-TECH

UNLESS OTHERWISE SPECIFIED: DIMENSIONS ARE IN INCHES TOLERANCES: FRACTIONAL ±1/32 ONE DECIMAL PLACE ± 0.060 TWO DECIMAL PLACE ± 0.025 THREE DECIMAL PLACE ± 0.010 DO NOT SCALE DRAWING	PART NO.	
	4A-NUP-4C	
	DWG. NO. 4A-NUP-4C-ASSY	
	WEIGHT: 0.198	REV A
DRAWN: MLJ	DATE: 3/16/2026	SCALE: 1:1
Q:\Nu-Tech Engineering\Nu-Tech - Products and Components 2025\Assembly Drawings\NUP Multi Leg Entry Seals\4ANUP4C\4A-NUP-4C-ASSY		SHEET 1 OF 1

8 7 6 5 4 3 2 1