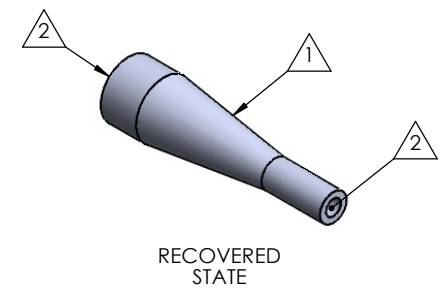
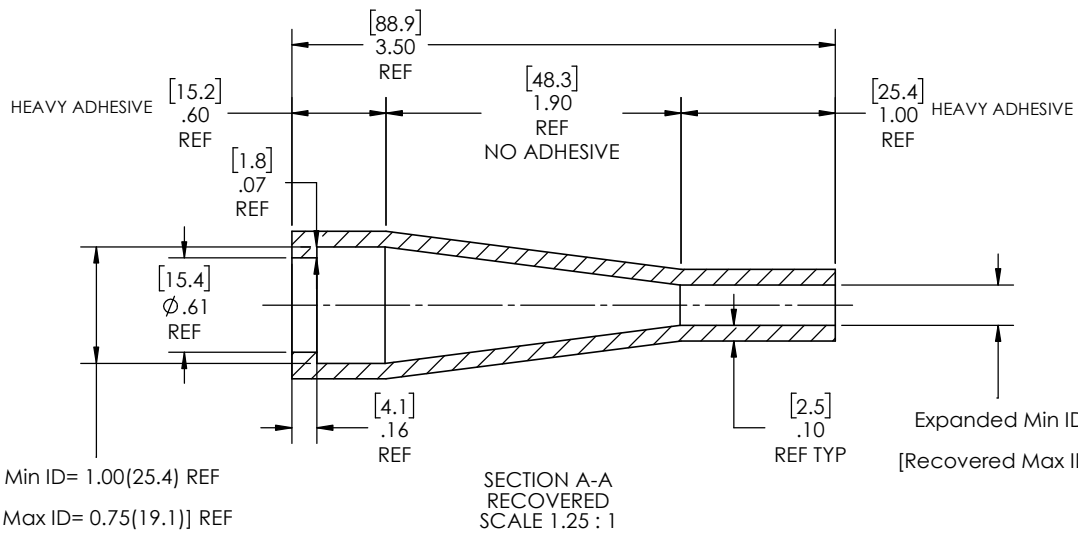
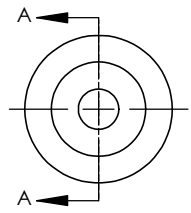
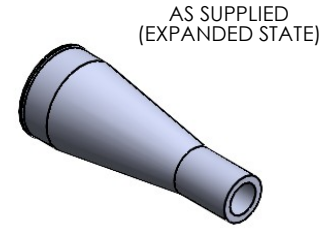
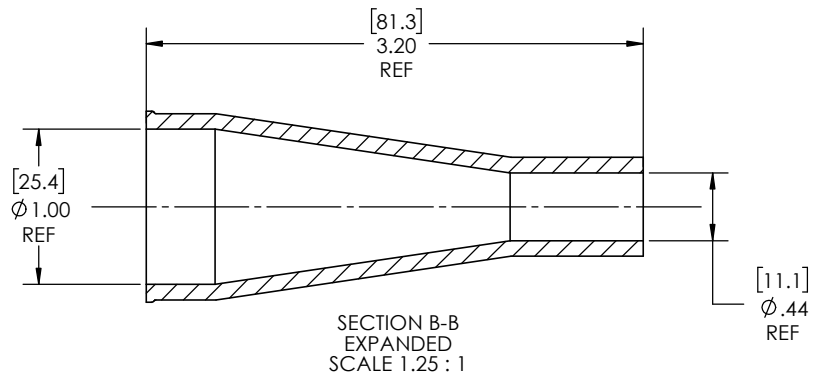
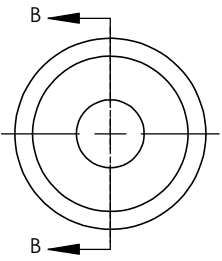


8 7 6 5 4 3 2 1

REVISIONS		
REV.	DESCRIPTION	DATE
A	UPDATE DRAWING TO 2025 STANDARDS	10/23/2025
B	UPDATE TOLERANCE TABLE	1/13/2026
C	ADJUST EXPANDED REFERENCE LENGTH TO REFLECT ACTUAL EXPANDED STATE PART SAMPLES	3/5/2026



Expanded Min ID= 1.00(25.4) REF  
[Recovered Max ID= 0.75(19.1)] REF

Expanded Min ID= 0.44(11.1) REF  
[Recovered Max ID= 0.26(6.6)] REF

- NOTES:
- ITEM#1 - HEAT SHRINKABLE BOOT MATERIAL IS IN ACCORDANCE WITH POLYOLEFIN STANDARDS DEFINED IN SAE AS81765/1 REFERENCE DIMENSIONS MAY DEVIATE AS MUCH AS +OR- 1/4"
  - ITEM#2 - FACTORY APPLIED HEAVY HOT MELT ADHESIVE IS STANDARD - **ONLY IN SPECIFIED INTERIOR SURFACES.**

ITEM	PART DESCRIPTION	PART NO.	MATERIAL
①	HEAT SHRINKABLE BOOT	M-476547	FLAME RETARDANT POLYOLEFIN
②	ADHESIVE		HOTMELT POLYAMIDE

**PROPRIETARY AND CONFIDENTIAL**  
THE INFORMATION CONTAINED IN THIS DRAWING IS THE SOLE PROPERTY OF Cross Technology INC. ANY REPRODUCTION IN PART OR AS A WHOLE WITHOUT THE WRITTEN PERMISSION OF Cross Technology INC. IS PROHIBITED.

**NU-TECH**

UNLESS OTHERWISE SPECIFIED: DIMENSIONS ARE IN INCHES TOLERANCES: FRACTIONAL ±1/16 ONE DECIMAL PLACE ± 0.200 TWO DECIMAL PLACE ± 0.100 THREE DECIMAL PLACE ± 0.050	PART DESC. <b>476547</b>
	DWG. NO. <b>476547</b>
	WEIGHT: <b>0.022</b> REV <b>C</b>
DRAWN: MLJ DATE: 3/24/2026	SCALE: 1.25:1 SHEET 1 OF 1

8 7 6 5 4 3 2 1