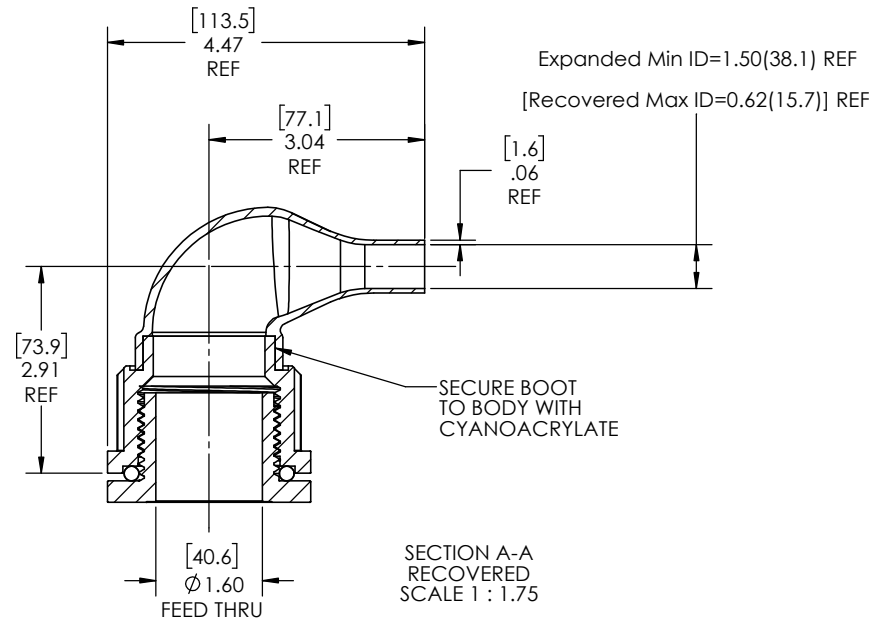
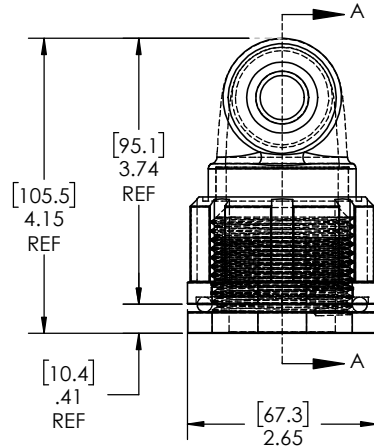
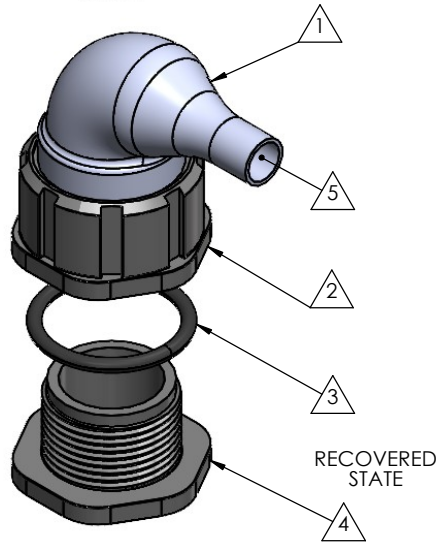
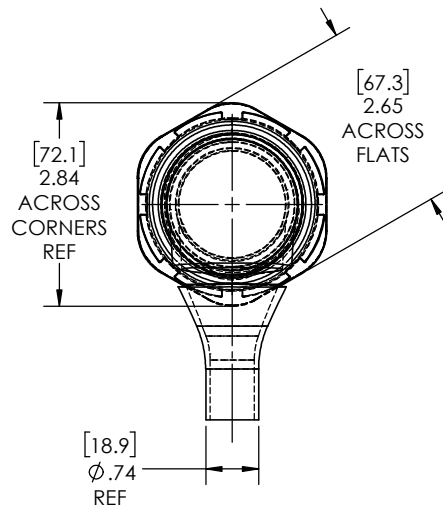
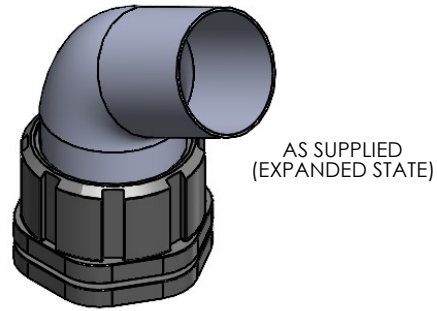


NOTE: REFERENCE FOR SEAL ASSEMBLY INSTALLATION:  
 ASSEMBLY MAY BE INSTALLED IN PANELS FROM  
 0.11"(2.8mm) - 0.63"(16.0mm).  
 RECCOMENDED DRILL HOLE DIAMETER  
 OF 2.00" (50.8mm)

REVISIONS		
REV.	DESCRIPTION	DATE
A	UPDATE DRAWING TO 2025 STANDARDS	5/14/2026



NOTES:

- ITEM#1 HEAT SHRINKABLE BOOT MATERIAL IS IN ACCORDANCE WITH POLYOLEFIN STANDARDS DEFINED IN SAE AS81765/1 REFERENCE DIMENSIONS MAY DEVIATE AS MUCH AS +OR- 1/4"
- FACTORY APPLIED HOT MELT ADHESIVE IS STANDARD

**PROPRIETARY AND CONFIDENTIAL**

THE INFORMATION CONTAINED IN THIS DRAWING IS THE SOLE PROPERTY OF Cross Technology INC. ANY REPRODUCTION IN PART OR AS A WHOLE WITHOUT THE WRITTEN PERMISSION OF Cross Technology INC. IS PROHIBITED.

ITEM	PART DESCRIPTION	PART NO.	MATERIAL
1	Heat-shrinkable boot	NU4R	Flame Retardant Polyolefin
2	Body	S-4B TRIMMED	Glass Fiber Reinforced, PBT
3	O-ring	AS-329	Buna
4	Nut	S-4N	Glass Fiber Reinforced, PBT
5	Adhesive		Hotmelt Polyamide

**NU-TECH**

UNLESS OTHERWISE SPECIFIED:  
 DIMENSIONS ARE IN INCHES  
 TOLERANCES:  
 FRACTIONAL ±1/32  
 ONE DECIMAL PLACE ± 0.060  
 TWO DECIMAL PLACE ± 0.025  
 THREE DECIMAL PLACE ± 0.010  
 DO NOT SCALE DRAWING

PART NO.  
**4-NUS-4R**

DWG. NO. **4-NUS-4R**

WEIGHT: **0.367** REV **A**

DRAWN: MLJ DATE: 5/14/2026 SCALE: 1:1.75 SHEET 1 OF 1