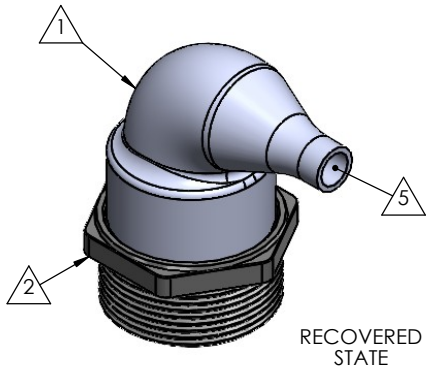
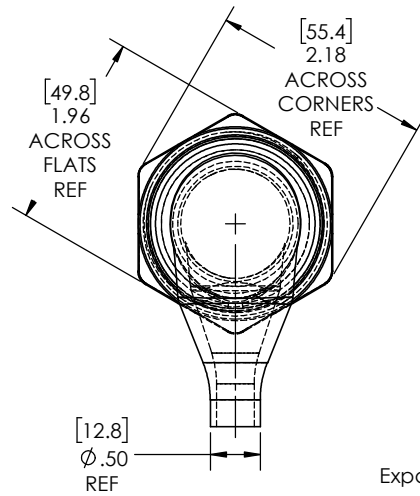
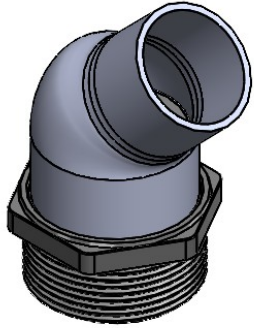
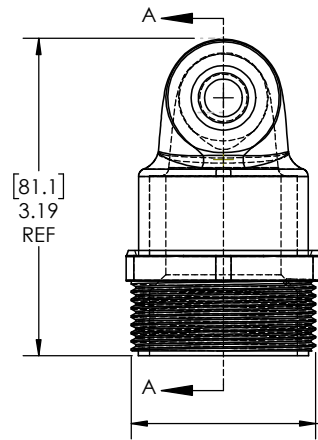


8 7 6 5 4 3 2 1

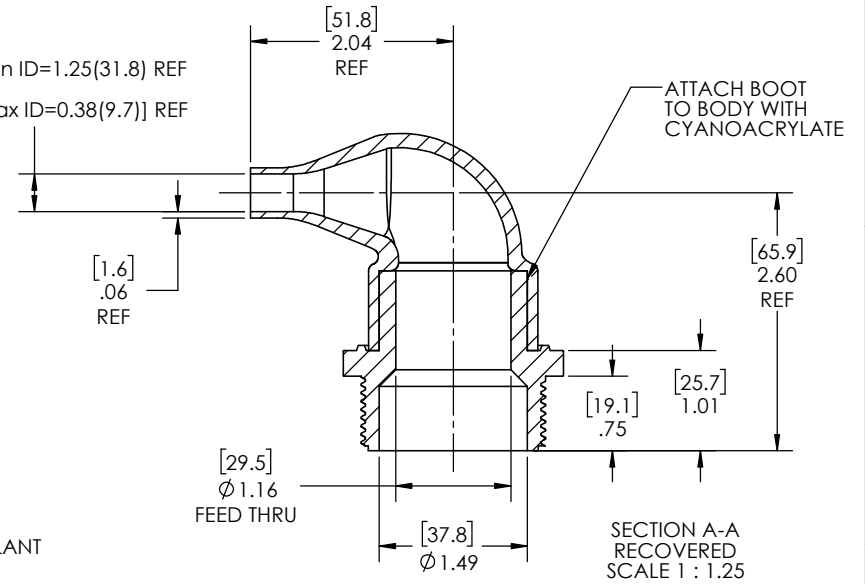
AS SUPPLIED  
(EXPANDED STATE)



RECOVERED STATE



Expanded Min ID=1.25(31.8) REF  
[Recovered Max ID=0.38(9.7)] REF



SECTION A-A  
RECOVERED  
SCALE 1 : 1.25

| REVISIONS |                                  |          |
|-----------|----------------------------------|----------|
| REV.      | DESCRIPTION                      | DATE     |
| A         | UPDATE DRAWING TO 2025 STANDARDS | 5/8/2026 |

NOTES:

- ITEM#1 HEAT SHRINKABLE BOOT MATERIAL IS IN ACCORDANCE WITH POLYOLEFIN STANDARDS DEFINED IN SAE AS81765/1 REFERENCE DIMENSIONS MAY DEVIATE AS MUCH AS +OR- 1/4"
- FACTORY APPLIED HOT MELT ADHESIVE IS STANDARD

**PROPRIETARY AND CONFIDENTIAL**

THE INFORMATION CONTAINED IN THIS DRAWING IS THE SOLE PROPERTY OF Cross Technology INC. ANY REPRODUCTION IN PART OR AS A WHOLE WITHOUT THE WRITTEN PERMISSION OF Cross Technology INC. IS PROHIBITED.

| ITEM | PART DESCRIPTION     | PART NO. | MATERIAL                    |
|------|----------------------|----------|-----------------------------|
| 1    | Heat-shrinkable boot | NU-3R    | Flame Retardant Polyolefin  |
| 2    | Body                 | P-4      | Glass Fiber Reinforced, PBT |
| 5    | Adhesive             |          | Hotmelt Polyamide           |

**NU-TECH**

UNLESS OTHERWISE SPECIFIED:  
DIMENSIONS ARE IN INCHES  
TOLERANCES:  
FRACTIONAL ±1/32  
ONE DECIMAL PLACE ± 0.060  
TWO DECIMAL PLACE ± 0.025  
THREE DECIMAL PLACE ± 0.010  
DO NOT SCALE DRAWING

PART NO.  
**4-NUP-3R**

DWG. NO. **4-NUP-3R**

WEIGHT: **0.130** REV **A**

DRAWN: MLJ DATE: 5/8/2026 SCALE: 1:1.25 SHEET 1 OF 1

8 7 6 5 4 3 2 1