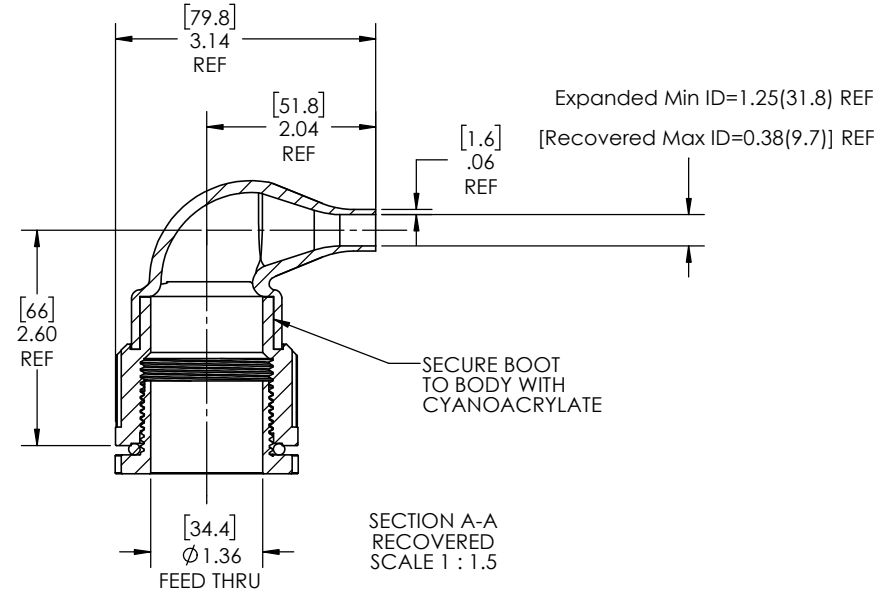
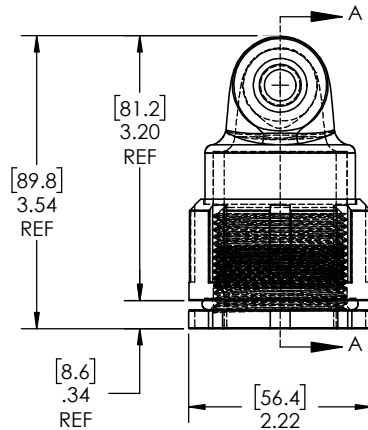
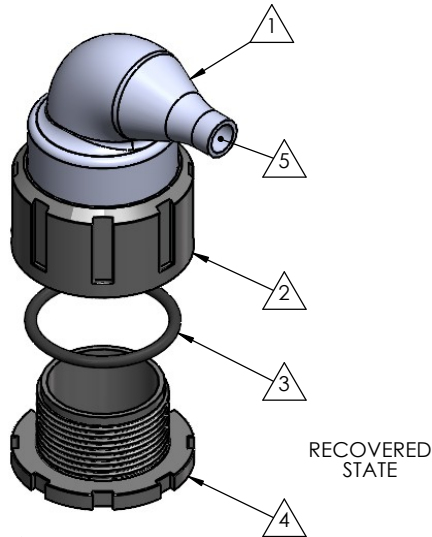
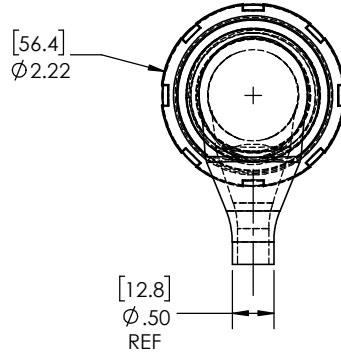
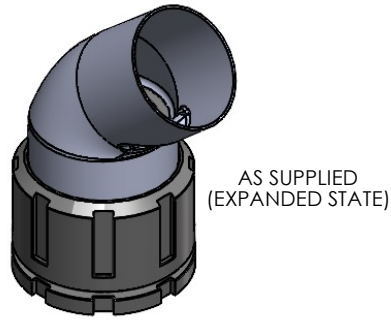


8 7 6 5 4 3 2 1

NOTE: REFERENCE FOR SEAL ASSEMBLY INSTALLATION:  
 ASSEMBLY MAY BE INSTALLED IN PANELS FROM  
 0.12"(3.1mm) - 0.48"(12.2mm).  
 RECCOMENDED DRILL HOLE DIAMETER  
 OF 1.65" (41.9mm)

| REVISIONS |                                  |           |
|-----------|----------------------------------|-----------|
| REV.      | DESCRIPTION                      | DATE      |
| A         | UPDATE DRAWING TO 2025 STANDARDS | 5/14/2026 |



NOTES:

- ITEM#1 HEAT SHRINKABLE BOOT MATERIAL IS IN ACCORDANCE WITH POLYOLEFIN STANDARDS DEFINED IN SAE AS81765/1 REFERENCE DIMENSIONS MAY DEVIATE AS MUCH AS +OR- 1/4"
- FACTORY APPLIED HOT MELT ADHESIVE IS STANDARD

**PROPRIETARY AND CONFIDENTIAL**

THE INFORMATION CONTAINED IN THIS DRAWING IS THE SOLE PROPERTY OF Cross Technology INC. ANY REPRODUCTION IN PART OR AS A WHOLE WITHOUT THE WRITTEN PERMISSION OF Cross Technology INC. IS PROHIBITED.

| ITEM | PART DESCRIPTION     | PART NO. | MATERIAL                    |
|------|----------------------|----------|-----------------------------|
| 1    | Heat-shrinkable boot | NU3R     | Flame Retardant Polyolefin  |
| 2    | Body                 | S-3XB    | Glass Fiber Reinforced, PBT |
| 3    | O-ring               | AS-223   | Buna                        |
| 4    | Nut                  | S-3XN    | Glass Fiber Reinforced, PBT |
| 5    | Adhesive             |          | Hotmelt Polyamide           |

**NU-TECH**

UNLESS OTHERWISE SPECIFIED:  
 DIMENSIONS ARE IN INCHES  
 TOLERANCES:  
 FRACTIONAL ±1/32  
 ONE DECIMAL PLACE ± 0.060  
 TWO DECIMAL PLACE ± 0.025  
 THREE DECIMAL PLACE ± 0.010  
 DO NOT SCALE DRAWING

PART NO.  
**3X-NUS-3R**

DWG. NO. **3X-NUS-3R**

WEIGHT: **0.208** REV **A**

DRAWN: MLJ DATE: 5/14/2026 SCALE: 1:1.5 SHEET 1 OF 1

8 7 6 5 4 3 2 1