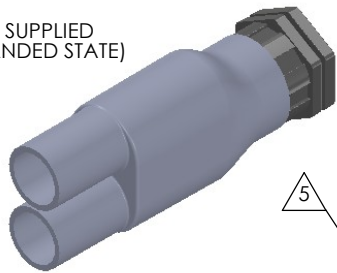
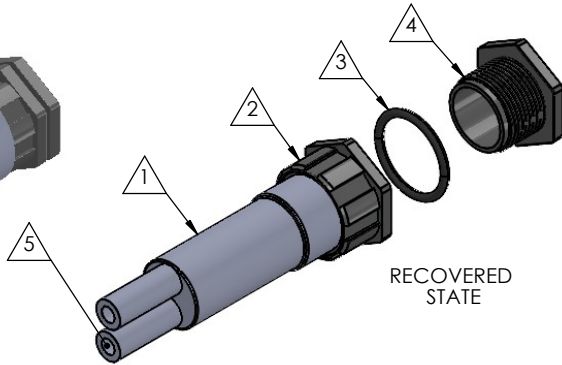


8 7 6 5 4 3 2 1

AS SUPPLIED
(EXPANDED STATE)

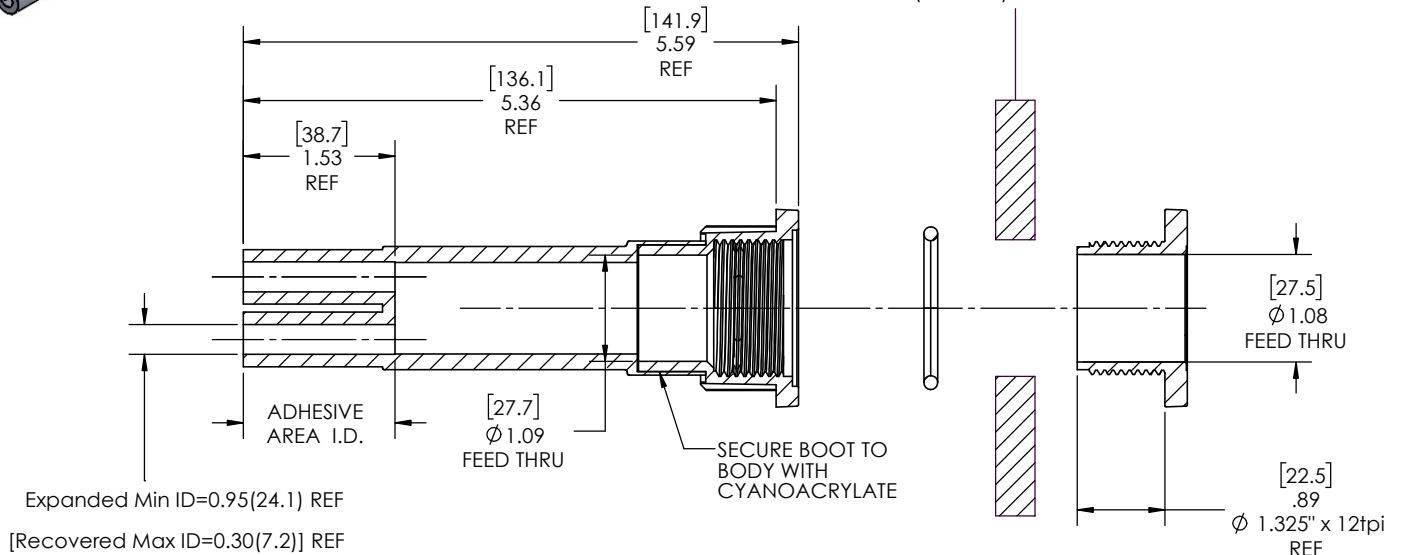
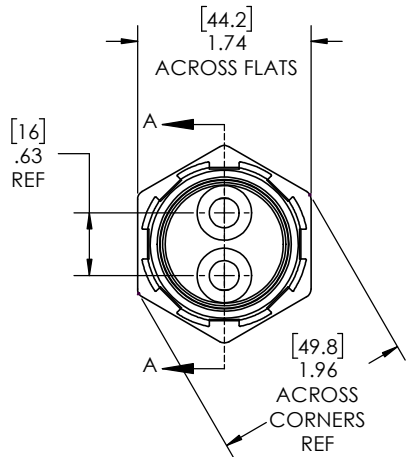


RECOVERED
STATE



REVISIONS		
REV.	DESCRIPTION	DATE
A	UPDATE DRAWING TO 2025 STANDARDS	12/3/2025
B	REFINE DIMENSIONS AND DECIMAL PRECISION	12/16/2025
C	UPDATE TOLERANCE TABLE	12/30/2025

NOTE: REFERENCE FOR SEAL ASSEMBLY INSTALLATION:
ASSEMBLY MAY BE INSTALLED IN PANELS FROM
0.08" (2.0mm) - 0.49" (12.4mm).
RECOMMENDED DRILL HOLE DIAMETER
OF 1.38" (34.9mm)



Expanded Min ID=0.95(24.1) REF
[Recovered Max ID=0.30(7.2)] REF

SECTION A-A
RECOVERED
SCALE 1 : 1.25

NOTES:

- ITEM#1 HEAT SHRINKABLE BOOT MATERIAL IS IN ACCORDANCE WITH POLYOLEFIN STANDARDS DEFINED IN SAE AS81765/1 REFERENCE DIMENSIONS MAY DEVIATE AS MUCH AS +OR- 1/4"
- FACTORY APPLIED HOT MELT ADHESIVE IS STANDARD

ITEM	PART DESCRIPTION	PART NO.	MATERIAL
1	Heat-shrinkable boot	NUBB2-3	Flame Retardant Polyolefin
2	Body	S-31B	Glass Fiber Reinforced, PBT
3	O-ring	AS-220	Buna
4	Nut	S-3N	Glass Fiber Reinforced, PBT
5	Adhesive		Hotmelt Polyamide

NU-TECH

UNLESS OTHERWISE SPECIFIED:
DIMENSIONS ARE IN INCHES
TOLERANCES:
FRACTIONAL ±1/32
ONE DECIMAL PLACE ± 0.060
TWO DECIMAL PLACE ± 0.025
THREE DECIMAL PLACE ± 0.010
DO NOT SCALE DRAWING

PART NO.
3-NUS-2C

DWG. NO. 3-NUS-2C-ASSY

WEIGHT: 0.181 REV C

DRAWN: MLJ DATE: 2/3/2026 SCALE: 1:1.25 SHEET 1 OF 1

8 7 6 5 4 3 2 1

8 7 6 5 4 3 2 1