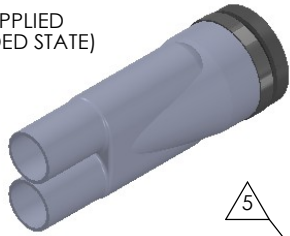


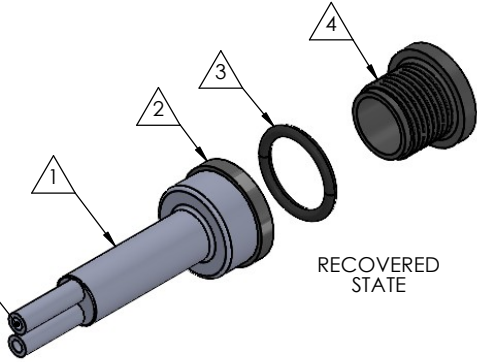
8 7 6 5 4 3 2 1

REVISIONS		
REV.	DESCRIPTION	DATE
A	UPDATE DRAWING TO 2025 STANDARDS	12/21/2025
B	REFINE DIMENSIONS AND DECIMAL PRECISION	12/16/2025
C	UPDATE TOLERANCE TABLE	12/30/2025

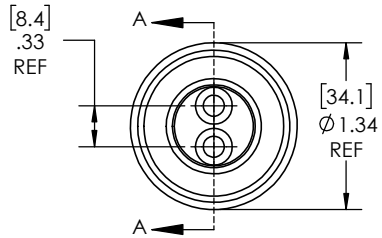
AS SUPPLIED
(EXPANDED STATE)



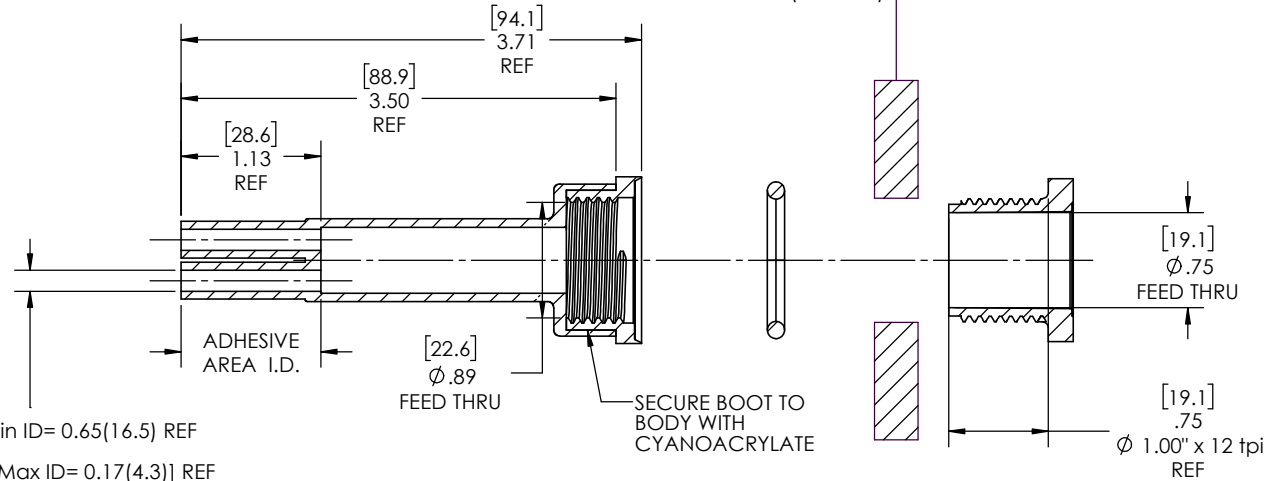
RECOVERED
STATE



NOTE: REFERENCE FOR SEAL ASSEMBLY INSTALLATION:
ASSEMBLY MAY BE INSTALLED IN PANELS FROM
0.08"(2.0mm) - 0.35"(8.9mm).
RECOMMENDED DRILL HOLE DIAMETER
OF 1.00" (25.4mm)



Expanded Min ID= 0.65(16.5) REF
[Recovered Max ID= 0.17(4.3)] REF



SECTION A-A
RECOVERED
SCALE 1 : 1

NOTES:

- ITEM #1 HEAT SHRINKABLE BOOT MATERIAL IS IN ACCORDANCE WITH POLYOLEFIN STANDARDS DEFINED IN SAE AS81765/1 REFERENCE DIMENSIONS MAY DEVIATE AS MUCH AS +OR- 1/4"
- FACTORY APPLIED HOT MELT ADHESIVE IS STANDARD

ITEM	PART DESCRIPTION	PART NO.	MATERIAL
1	Heat-shrinkable boot	NUBB2-2	Flame Retardant Polyolefin
2	Body	S-2XB	Glass Fiber Reinforced, PBT
3	O-ring	AS-214	Buna
4	Nut	S-2XN	Glass Fiber Reinforced, PBT
5	Adhesive		Hotmelt Polyamide

NU-TECH

UNLESS OTHERWISE SPECIFIED:
DIMENSIONS ARE IN INCHES
TOLERANCES:
FRACTIONAL ±1/32
ONE DECIMAL PLACE ± 0.060
TWO DECIMAL PLACE ± 0.025
THREE DECIMAL PLACE ± 0.010

PART NO.
2X-NUS-2B

DWG. NO. 2X-NUS-2B-ASSY

WEIGHT: 0.052 REV C

DO NOT SCALE DRAWING

DRAWN: MLJ DATE: 2/3/2026

SCALE: 1:1 SHEET 1 OF 1

8 7 6 5 4 3 2 1

8 7 6 5 4 3 2 1