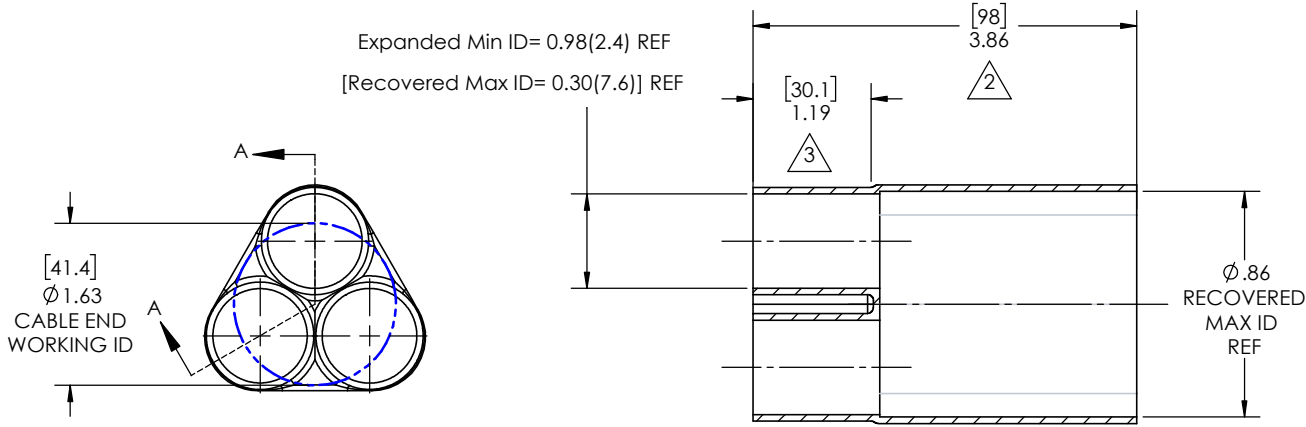
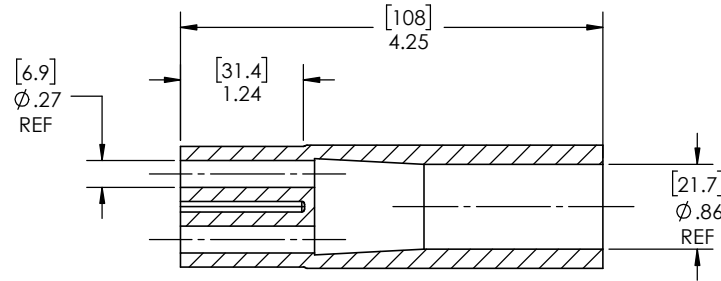
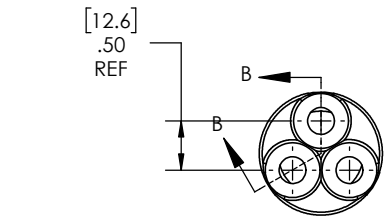
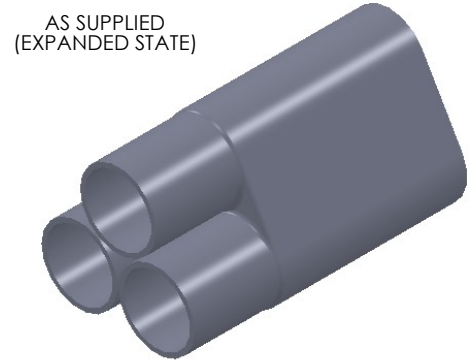


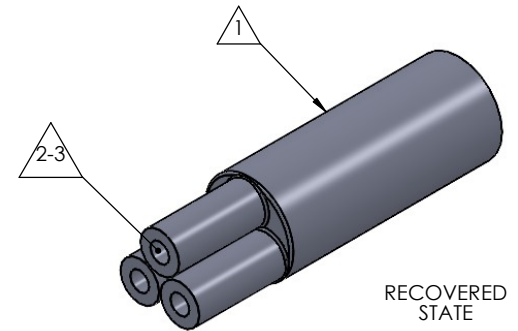
REVISIONS		
REV.	DESCRIPTION	DATE
A	UPDATE DRAWING TO 2025 STANDARDS	11/10/2025



SECTION A-A
EXPANDED
SCALE 1 : 1.25



SECTION B-B
RECOVERED
SCALE 1 : 1.25



NOTES:

- ITEM#1 - HEAT SHRINKABLE BOOT MATERIAL IS IN ACCORDANCE WITH POLYOLEFIN STANDARDS DEFINED IN SAE AS81765/1 REFERENCE DIMENSIONS MAY DEVIATE AS MUCH AS +OR- 1/4"
- ITEM#2 - FACTORY APPLIED HOT MELT ADHESIVE IS STANDARD ON ENTIRE INSIDE SURFACE FOR BOOTS SOLD INDIVIDUALLY.
- ITEM #3 - BOOTS INTENDED FOR NU-TECH ASSEMBLIES WILL HAVE HOTMELT APPLIED INSIDE LEGS ONLY AFTER ASSEMBLY HAS BEEN COMPLETED.

PROPRIETARY AND CONFIDENTIAL
THE INFORMATION CONTAINED IN THIS DRAWING IS THE SOLE PROPERTY OF Cross Technology INC. ANY REPRODUCTION IN PART OR AS A WHOLE WITHOUT THE WRITTEN PERMISSION OF Cross Technology INC. IS PROHIBITED.

COMMENTS:
SEE NOTES FOR MATERIAL SPECIFICATIONS AND LENGTH VARIANCE
MATERIAL:
Flame Retardant Polyolefin
FINISH:
-

UNLESS OTHERWISE SPECIFIED:
DIMENSIONS ARE IN INCHES
TOLERANCES:
FRACTIONAL ±1/16
ONE DECIMAL PLACE ± 0.200
TWO DECIMAL PLACE ± 0.100
THREE DECIMAL PLACE ± 0.050

PART DESC.
NUBB3-3
DWG. NO. NUBB3-3
WEIGHT: 0.0589
REV A