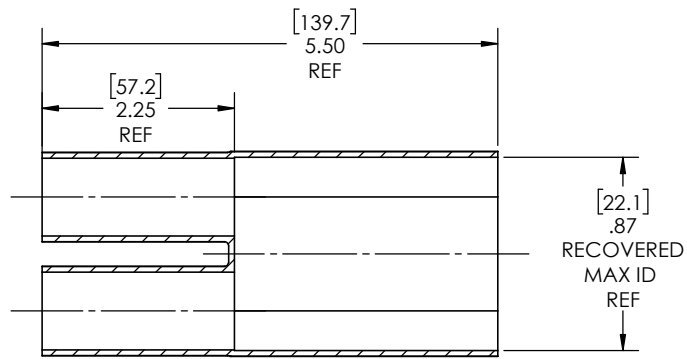
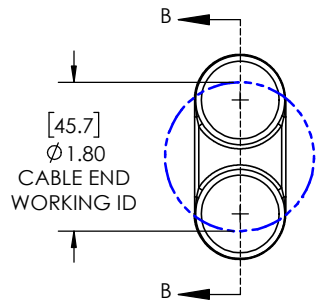


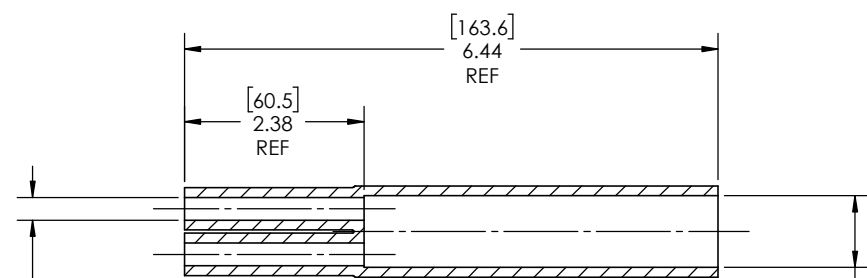
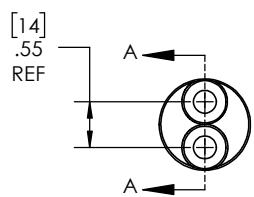
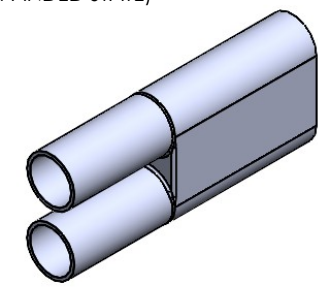
8 7 6 5 4 3 2 1

| REVISIONS |                                  |           |
|-----------|----------------------------------|-----------|
| REV.      | DESCRIPTION                      | DATE      |
| A         | UPDATE DRAWING TO 2025 STANDARDS | 4/23/2026 |



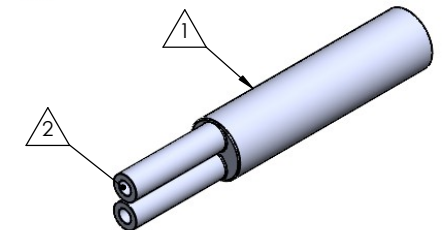
SECTION B-B  
EXPANDED  
SCALE 1 : 1.5

AS SUPPLIED  
(EXPANDED STATE)



SECTION A-A  
RECOVERED  
SCALE 1 : 1.5

Expanded Min ID= 1.80(45.7) REF  
[Recovered Max ID = 0.87(22.1)] REF



RECOVERED  
STATE

NOTES:

- ITEM#1 - HEAT SHRINKABLE BOOT MATERIAL IS IN ACCORDANCE WITH POLYOLEFIN STANDARDS DEFINED IN SAE AS81765/1 REFERENCE DIMENSIONS MAY DEVIATE AS MUCH AS +OR- 1/4"
- ITEM#2 - FACTORY APPLIED HOT MELT ADHESIVE IS STANDARD - INTERIOR SURFACES.

| ITEM | PART DESCRIPTION     | PART NO.   | MATERIAL                   |
|------|----------------------|------------|----------------------------|
| ①    | HEAT SHRINKABLE BOOT | NUBB2-4822 | FLAME RETARDANT POLYOLEFIN |
| ②    | ADHESIVE             |            | HOTMELT POLYAMIDE          |

**PROPRIETARY AND CONFIDENTIAL**

THE INFORMATION CONTAINED IN THIS DRAWING IS THE SOLE PROPERTY OF Cross Technology INC. ANY REPRODUCTION IN PART OR AS A WHOLE WITHOUT THE WRITTEN PERMISSION OF Cross Technology INC. IS PROHIBITED.

**NU-TECH**

|                                                                                                                                                                                     |                                 |
|-------------------------------------------------------------------------------------------------------------------------------------------------------------------------------------|---------------------------------|
| UNLESS OTHERWISE SPECIFIED:<br>DIMENSIONS ARE IN INCHES<br>TOLERANCES:<br>FRACTIONAL ±1/16<br>ONE DECIMAL PLACE ± 0.200<br>TWO DECIMAL PLACE ± 0.100<br>THREE DECIMAL PLACE ± 0.050 | PART DESC.<br><b>NUBB2-4822</b> |
| DWG. NO.<br>NUBB2-4822                                                                                                                                                              | REV<br>A                        |
| WEIGHT:<br>0.075                                                                                                                                                                    | SCALE:<br>1:1.5                 |
| DRAWN: MLJ                                                                                                                                                                          | DATE: 4/23/2026                 |
| SHEET 1 OF 1                                                                                                                                                                        |                                 |

8 7 6 5 4 3 2 1